

COTTAR'S 1920S SAFARI CAMP
MASAI MARA, KENYA



WELCOME TO COTTAR'S 1920S SAFARI CAMP

CALVIN AND LOUISE COTTAR ESTABLISHED COTTAR'S 1920S SAFARI CAMP IN THE MID-NINETIES. THE AWARD-WINNING CAMP IS LOCATED IN THE FAMOUS 'SEVENTH' NATURAL WONDER OF THE WORLD, THE MASAI MARA IN KENYA. THE CAMP IS OWNED BY THE OLDEST ESTABLISHED AND CONTINUING SAFARI FAMILY IN AFRICA AND PROVIDES GENUINELY STUNNING WILDLIFE AND WILDERNESS EXPERIENCES TO DISCERNING, EXPERIENTIAL TRAVELLERS.

EXTENDING AN ERA OF LUXURY AND QUALITY, COTTAR'S 1920S SAFARI CAMP RETURNS TO THE ORIGINAL SPIRIT AND ESSENCE OF 'SAFARI': AN ABUNDANCE OF WILDLIFE, A GUARANTEE OF PRIVACY, AND THE HIGHEST STANDARDS OF PROFESSIONAL GUIDING IN A LUXURIOUS AND AUTHENTIC CAMPING ENVIRONMENT. COTTAR'S 1920S SAFARI CAMP PROVIDES THE ROMANCE OF SAFARI UNDER CREAM CANVAS TENTS, THE STYLE OF THE BYGONE ERA OF THE TWENTIES WITH BUTLER-DELIVERED SILVER SERVICE, WHILE AT THE SAME TIME SUPPLYING THE AMENITIES REQUIRED BY TODAY'S MODERN WORLD TRAVELLERS AND PROFESSIONAL GUIDES WHOSE QUALIFICATIONS ARE THE HIGHEST IN AFRICA.

THANK YOU FOR CHOOSING COTTAR'S 1920S SAFARI CAMP AND WE HOPE YOU ENJOY YOUR STAY WITH US.

COTTARS SAFARI SERVICE SINCE 1919...THE TRADITION CONTINUES.

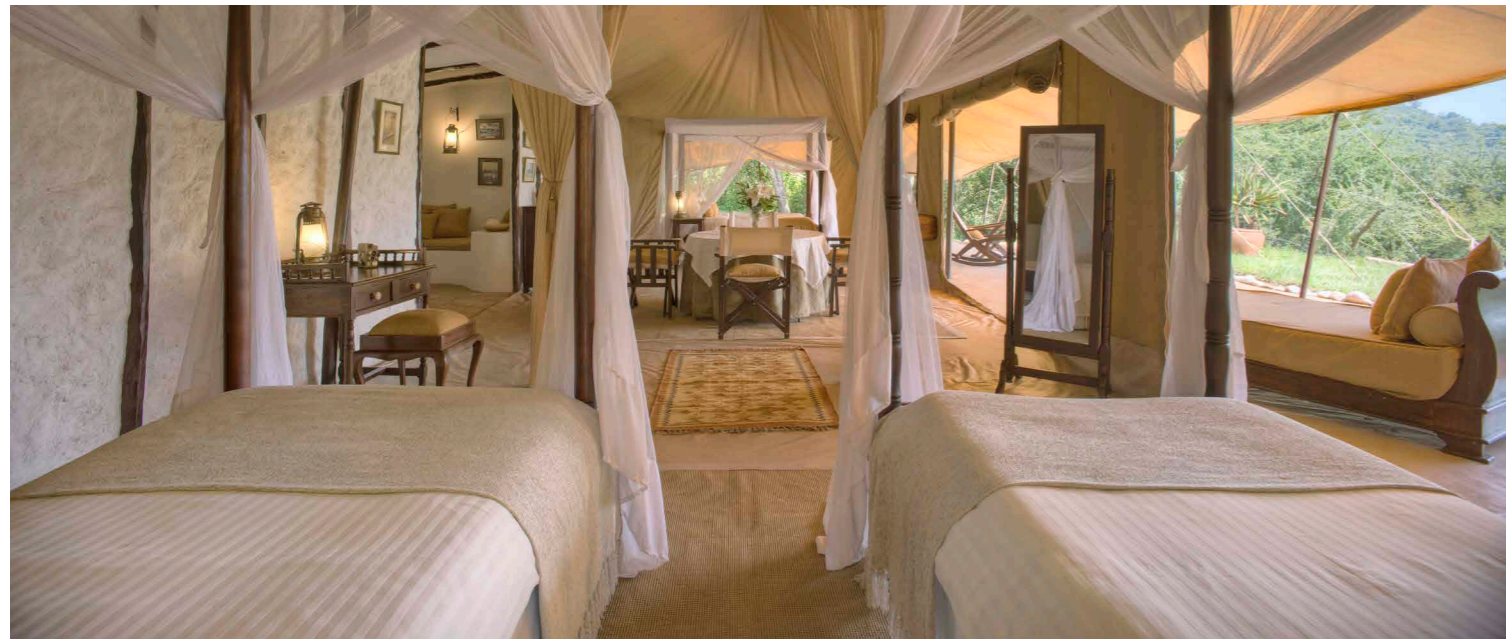
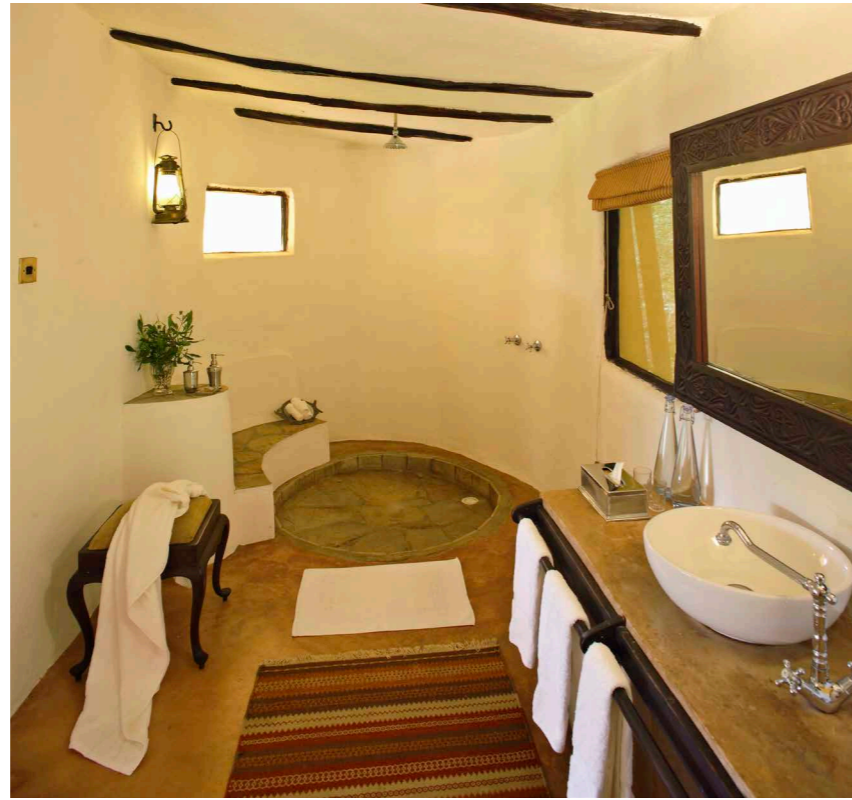


A LUXURY FAMILY TENT

THE LUXURY FAMILY TENTED SUITES

WE HAVE FOUR FAMILY TENTED SUITES ~ EACH SUITE CONSISTS OF TWO ENSUITE BEDROOMS WITH A SHARED VERANDA, SITTING & DINING ROOM. THE BEDROOM AREAS ARE SEPARATED FROM THE SITTING ROOM BY CURTAINS.

WE ARE A CHILD FRIENDLY CAMP AND WE UNDERSTAND THAT FAMILY SAFARIS ARE EXTREMELY IMPORTANT. WE TAKE CONSIDERABLE TIME, CARE AND ATTENTION TO ENSURE IT WILL BE A HOLIDAY OF A LIFETIME. WE CAN ARRANGE EARLY DINNERS AND CHILDREN'S MENUS. SPECIAL ACTIVITIES FOR THE ACTIVE OLDER CHILDREN CAN ALSO BE ORGANISED (THROUGH BUT NOT LIMITED TO OUR MAASAI WARRIOR SCHOOL PROGRAMME). A NANNY IS ALSO AVAILABLE (FREE OF CHARGE) ON REQUEST.





A LUXURY DOUBLE TENTED SUITE

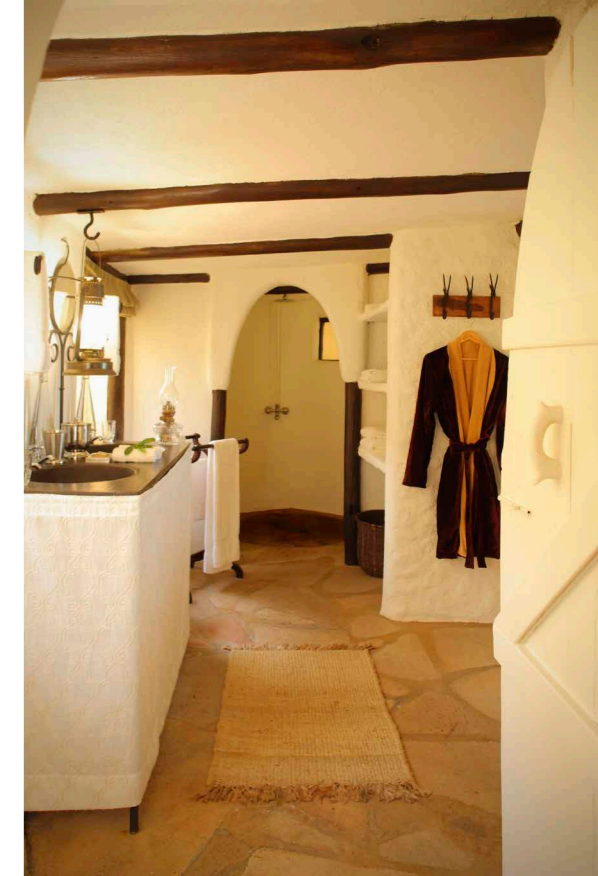


THE LUXURY DOUBLE TENTED SUITES

WE HAVE FOUR 1920'S STYLE, WHITE ENSUITE TENTS
~ THREE DOUBLES AND ONE TWIN.

THE CAMP HAS NINE TENTS IN TOTAL (ONE UNIQUE
HONEYMOON TENT, FOUR DOUBLE TENTS AND FOUR
FAMILY SUITES), ALL WITH EN SUITE BATHROOMS.

THE ENTIRE CAMP IS SITUATED TO ENSURE THAT TENTS
ARE PRIVATE AND QUIET, WHETHER FOR HONEYMOONERS
OR FAMILIES WITH YOUNG CHILDREN.





THE HONEYMOON TENT AT COTTAR'S



THE CAMP HAS TWO MAIN MESS TENT AREAS FOR FINE DINING, DRINKING, READING AND RELAXING. THE CAMP SPREADS OVER 1 KILOMETRE SO GUESTS ARE ASSURED A SPACIOUS YET INTIMATE ENVIRONMENT.

THE MAIN MESS TENT



COTTAR'S KITCHEN

WE PRIDE OURSELVES ON THE QUALITY AND VARIETY OF OUR FOOD. OUR CHEFS PREPARE MOUTH-WATERING, HEALTHY AND BALANCED DISHES USING THE FRESHEST INGREDIENTS, MUCH OF WHICH IS GROWN IN OUR OWN ORGANIC VEGETABLE GARDEN.

COMMUNAL DINING IS ENCOURAGED, HOWEVER, WE ARE HAPPY TO PROVIDE PRIVATE DINING ARRANGEMENTS ON REQUEST. BUSH MEALS AND SUNDOWNERS AND MEALS AT THE POOL PAVILION CAN ALSO BE ARRANGED.



THE MESS TENT BY THE POOL



THE SWIMMING POOL - THE PERFECT PLACE FOR HOURS OF LOUNGING, READING AND RELAXING.



GUIDED BUSH WALK

ACTIVITIES

DAY & NIGHT GAME DRIVES
BUSH MEALS & SUNDOWNERS
SWIMMING POOL
RIVER/WATERFALL SWIMMING & FISHING

GUIDED BUSH WALKS
CULTURAL VISITS
GIFT SHOP

RUNNING WITH MAASAI
MASAI WARRIOR SCHOOL
SPA TREATMENTS

CLIMATE

KENYA'S DIVERSE GEOGRAPHY MEANS THAT TEMPERATURE, RAINFALL AND HUMIDITY VARY WIDELY, WE HAVE TWO RAINY SEASONS:

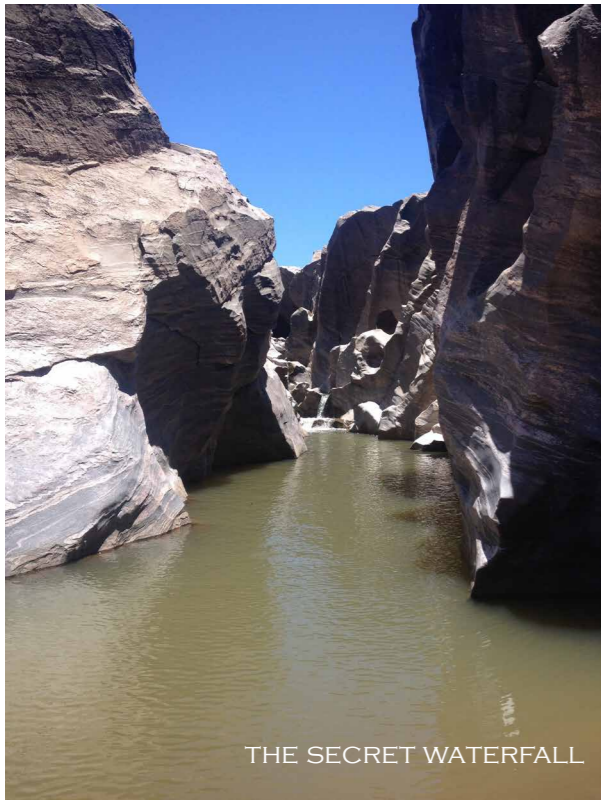
» THE "SHORT RAINS" WHICH OCCUR FROM LATE OCTOBER THROUGH NOVEMBER.

» THE "LONG RAINS" WHICH OCCUR FROM LATE MARCH TO EARLY JUNE.

TEMPERATURES VARY FROM 10°C TO 28°C. JULY AND AUGUST ARE THE COOLEST MONTHS AND ARE OFTEN OVERCAST ESPECIALLY IN THE MORNING. DECEMBER-MID MARCH IS THE WARMEST TIME OF THE YEAR.



EXPERIENCE THE GREAT MIGRATION



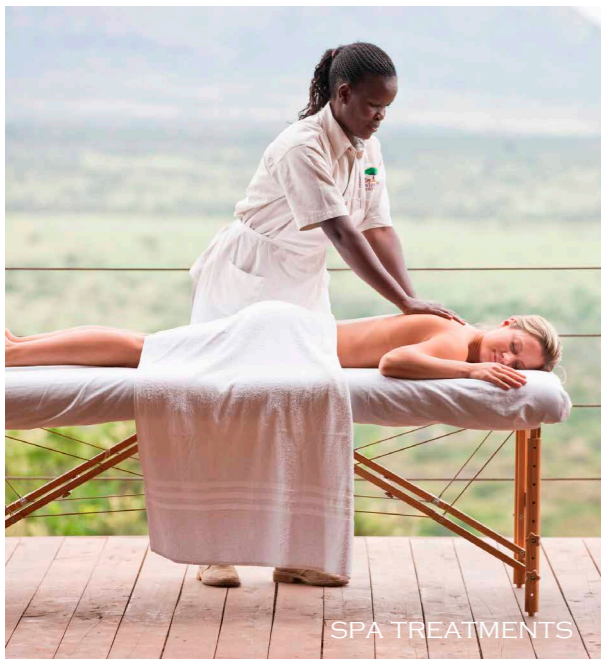
THE SECRET WATERFALL



SUNDOWNERS



MASAI DANCING



SPA TREATMENTS



LOCAL MASAI VILLAGE VISITS



COTTAR'S FAMOUS CANVAS BATHS



MASAI WARRIOR SCHOOL



PLEASE NOTE THAT ALTHOUGH WE HAVE A VINTAGE SAFARI CAR IT IS NOT THE MOST IDEAL VEHICLE FOR LONG GAME DRIVES SO OUR GAME DRIVES ARE DONE USING VEHICLES SIMILAR TO THE ONE IN THE PICTURE ABOVE. A GAME DRIVE IN THE VINTAGE CAR IS POSSIBLE ON REQUEST AND IT CAN BE USED FOR AIRSTRIP TRANSFERS.



A BUSH DINNER



THE 4Cs

CONSERVATION: COTTAR'S WILDLIFE CONSERVATION TRUST (CWCT) SUPPORTS THE ESTABLISHMENT OF A 6,000 ACRE OLDERKESI WILDLIFE CONSERVANCY PILOT PROJECT ON THE BOUNDARY AND KEY WILDLIFE CORRIDOR OF THE MAASAI MARA NATIONAL RESERVE AND THE SERENGETI NATIONAL PARK. CWCT HAS BEEN ACTIVELY ENGAGED IN THE PRESERVATION OF NATURAL HABITATS AND WILDLIFE IN THE AREA, IN SECURING THE AREA FROM POACHERS AND FOR THE PROTECTION OF THE COMMUNITY.

COMMERCE: THE COTTAR'S ARE IN PARTNERSHIP WITH THE MASAI COMMUNITY AND MANAGE THEIR LAND ON THEIR BEHALF (FOR WILDLIFE USE) AT RATES COMPETITIVE WITH OTHER ECONOMIC USES PROVIDING ALTERNATIVE LIVELIHOOD OPPORTUNITIES.

CULTURE: COTTAR'S CAMP IS NEIGHORED BY THE MAASAI COMMUNITY, A TRIBE THAT HAS SO FAR MAINTAINED IT'S TRADITIONAL WAY OF LIFE. TO ENSURE GUESTS DON'T MISS OUT ON THE INTRICACIES OF THIS VIBRANT CULTURE, COTTAR'S TAKE THEM ON EXCURSIONS TO VARIOUS MAASAI VILLAGES FOR THEM TO EXPERIENCE MAASAI CULTURE FIRST HAND. WE ALSO PROVIDE A MARKET FOR BEADWORK AND OTHER TRADITIONAL HANDICRAFTS PRODUCED BY MAASAI WOMEN AS AN ADDITIONAL WAY OF PRESERVING MAASAI CULTURE AND SUPPORT FOR DEVELOPMENT.

COMMUNITY: COTTAR'S 1920S CAMP MAINTAINS CLOSE TIES TO NEIGHBORING COMMUNITIES AND IS KEEN TO ADDRESS THE CHALLENGES THEY FACE. THE CWCT HAS FOR MANY YEARS ACTIVELY SUPPORTED THE MAASAI COMMUNITY'S STRUGGLE TO OBTAIN LAND TENURE RESULTING IN THE LEGAL OWNERSHIP OF THE OLDERKESI GROUP RANCH IN 2010.

COMMUNITY PROJECTS

WE TAKE PRIDE IN SAYING THAT MOST OF OUR EMPLOYEES ARE FROM THE LOCAL COMMUNITY, BY THIS WE ARE ACTIVELY INVOLVING THEM IN DEVELOPMENT. WE CONDUCT LOCAL CLINIC VISITS (DENTAL, AMBULANCE TRANSFERS AND OTHER GENERAL SERVICES) WHICH ARE ARRANGED BY VOLUNTEER GROUPS WHO COME THROUGH COTTAR'S 1920S CAMP. WE HAVE ALSO BUILT A FOOT BRIDGE WITH BRIDGING THE GAP AFRICA. THE PEOPLE CAN NOW ACCESS SOCIAL AMENITIES UNLIKE BEFORE WHERE THEY HAD DIFFICULTY CROSSING THE SAND RIVER ESPECIALLY DURING FLOODS. THE BRIDGE IS NOW SAVING AN AVERAGE OF SIX LIVES A YEAR.

THE COTTAR'S WILDLIFE CONSERVATION TRUST (CWCT) WILL BE RUNNING A SCOUT OPERATION FOR WILDLIFE MONITORING, ANTI-POACHING, ANTI-DEFORESTATION AND A HOST OF OTHER FUNCTIONS NECESSARY TO OPERATE A WILDLIFE CONSERVANCY. WE HAVE ALSO ACQUIRED A GYROCOPTER TO DO AERIAL RECONNAISSANCE OF ACTIVITIES WITHIN THE CONSERVANCY AND WIDER MARA AREA TO HELP BUILD A TIME LAPSE DATA BASE OF LAND USE CHANGE, WILDLIFE AND LIVESTOCK COUNTS. ADDITIONAL DONOR FUNDING FOR THIS WILL HAVE A BIG IMPACT ON LAND USE CHANGE DECISIONS FOR THE FUTURE.

IN REGARDS TO BEING MEMBERS OF THE LONG RUN DESTINATIONS WHICH PRACTICE THE 4C'S (COMMUNITY, CONSERVATION, CULTURE & COMMERCE), AND PRIOR TO THE CONSERVANCY PROJECT, COTTARS BUILT THE OLPALAGILAGI PRIMARY SCHOOL FOR A TOTAL OF 200 STUDENTS, PAYING TEACHERS SALARIES AND — TO KEEP THE CHILDREN COMING TO SCHOOL — WE ALSO RUN A FEEDING PROGRAM FOR THEM.

MANY THANKS TO ALL THE PEOPLE AND ORGANIZATIONS THAT MADE EFFORTS TO SUPPORT CWCT. NOTHING OF VALUE IS EVER FOR FREE, NOR CAN ANYTHING SUSTAINABLE BE ACHIEVED WITHOUT OWNERSHIP AND COMMITMENT BY THE INTENDED BENEFICIARIES.



THE JOURNEY

YOUR COTTAR'S EXPERIENCE BEGINS AS YOU DISEMBARK AT EITHER COTTAR'S PRIVATE AIRSTRIP (A 10 MINUTE DRIVE FROM THE CAMP) OR KEEKOROK AIRSTRIP (A 1.5 HOUR GAME DRIVE FROM THE CAMP). YOU WILL BE GREETED BY YOUR COTTAR'S GUIDE, WHO WILL ESCORT YOU AND YOUR PARTY TO THE CAMP FOR YOUR WELCOME INTRODUCTION. THEN IT'S ALL UP TO YOU TO DECIDE HOW YOU WOULD LIKE TO SPEND YOUR TIME WITH US. YOUR HOLIDAY BEGINS.



WHAT TO PACK?

IMPORTANT:

PASSPORT (KENYAN IMMIGRATION AUTHORITIES REQUIRE A MINIMUM OF TWO BLANK (UNSTAMPED) VISA PAGES IN THE PASSPORT TO ENTER THE COUNTRY) OR KENYAN IDENTIFICATION CARD

VISA

YELLOW FEVER VACCINATION (ONLY REQUIRED OF ALL TRAVELLERS OVER ONE YEAR OLD, ARRIVING FROM YELLOW FEVER INFECTED COUNTRIES)

AIR TICKETS/VOUCHERS/INSURANCE DETAILS

CREDIT CARDS (MASTERCARD OR VISA)

DEBIT CARDS (FOR USE AT ATM)

SUN GLASSES AND SOLID CASE

PRESCRIPTION GLASSES (WITH EXTRA PAIR) AND SOLID CASE

CONTACT LENSES (WITH EXTRA PAIR), WE RECOMMEND THAT YOU

ALSO BRING A PAIR OF GLASSES IN CASE OF DUST IRRITATION.

BOOKS/MAGAZINES/JOURNALS

CONVERTER/PLUG SET (KENYA USES 220V ENGLISH SQUARE PIN)

BINOCULARS – A MUST!

FLASHLIGHT (SMALL, WITH EXTRA BATTERIES)

CAMERA & EQUIPMENT: BATTERY CHARGER AND ADAPTER, LARGE MEMORY CARD ETC.

TOILETRIES:

MALARIA PROPHYLACTICS (IF YOU CHOOSE)

ANTI-HISTAMINE PILLS/CREAM (PILLS ARE MORE SUITABLE FOR PEOPLE WITH ALLERGIES AND FAST REACTIONS TO BITES)

INSECT REPELLENT

MOTION SICKNESS PILLS (IF NEEDED)

PAINKILLERS

SUNSCREEN (WE RECOMMEND LOTION WITH HIGH PROTECTION AS MOST OF KENYA IS AT HIGH ALTITUDES)

AFTERSUN LOTION

FACE AND HAND CLEANING WIPES

BODY LOTION

BATTERY OR HAND RAZOR

HAIR BRUSH

SHAMPOO AND CONDITIONER.

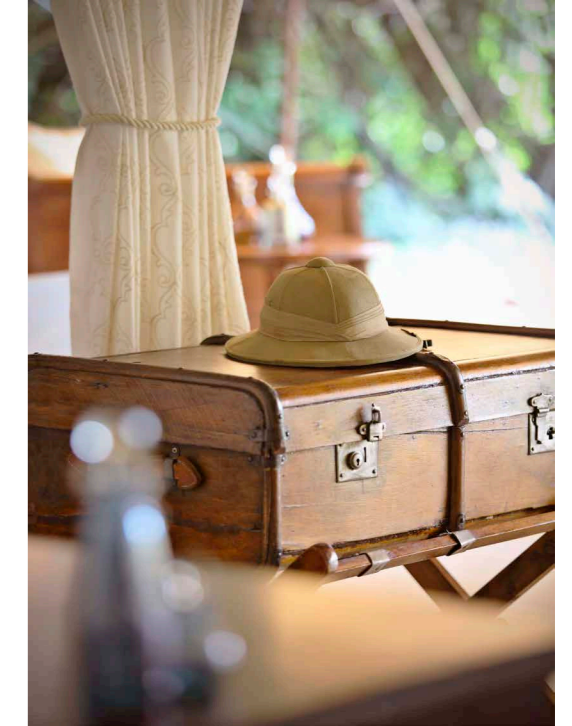
DEODORANT

FEMININE HYGIENE SUPPLIES

LIP BALM (RECOMMENDED WITH AN SPF)

TOOTHPASTE AND TOOTHBRUSH

EYE DROPS (IF NEEDED)



CLOTHING:

SUNHAT

WINDPROOF/WATERPROOF JACKET

FLEECE

JUMPER/SWEATSHIRT

SAFARI TROUSERS

SAFARI SHORTS

SPORTS SOCKS

SHORT SLEEVED SHIRTS & / OR T-SHIRTS

LONG SLEEVED SHIRTS/TOPS/BLOUSES

PYJAMAS

SWIMMING COSTUMES

UNDERWEAR

LIGHT WALKING SHOES FOR EVERYDAY USE

PAIR OF SANDALS/FLIP-FLOPS

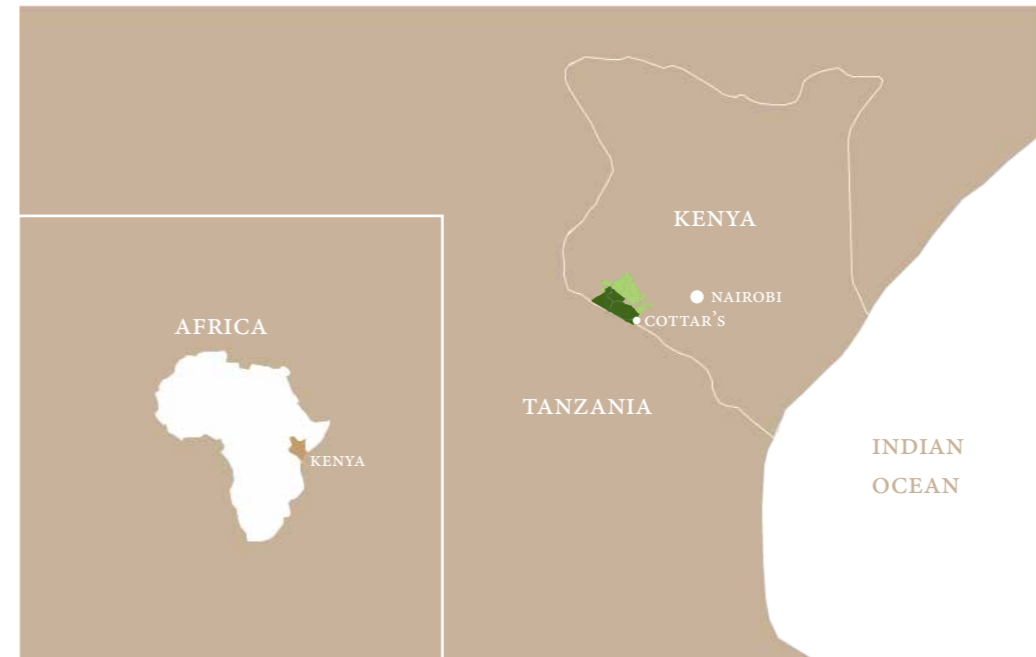
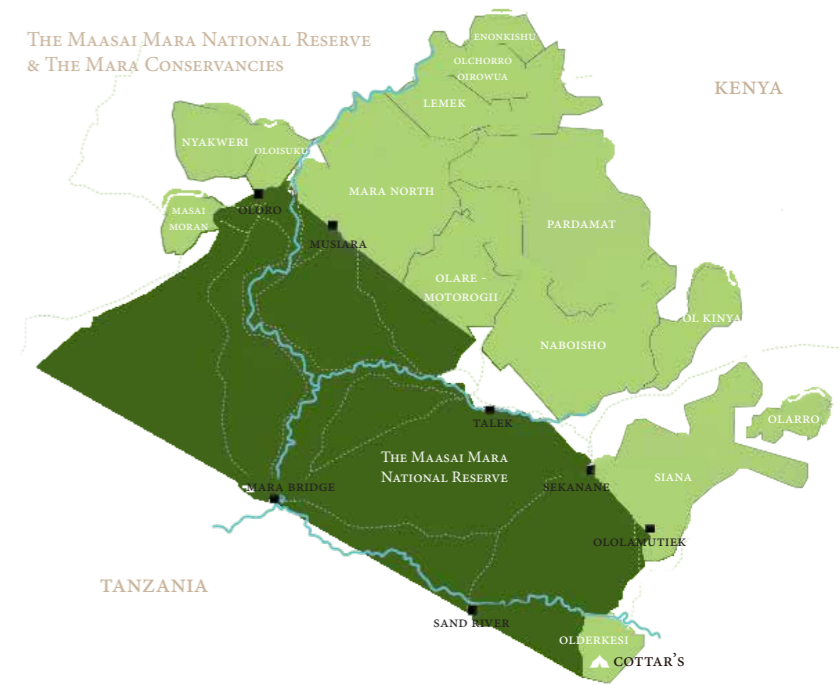
PAIR OF CLOSED SHOES FOR THE EVENING

NOTE: THERE MAY BE A RESTRICTION ON LUGGAGE LIMITS ON YOUR SAFARI – PLEASE ENSURE THAT YOU HAVE THE DETAILS FROM YOUR AGENT ACCORDING TO YOUR ITINERARY AND ASK YOUR AGENT AHEAD OF TIME IF YOU WOULD LIKE DETAILS ON THE FEASIBILITY AND COSTS OF TAKING EXCESS LUGGAGE WITH YOU ON ANY OF THESE RESTRICTED LUGGAGE SAFARIS.

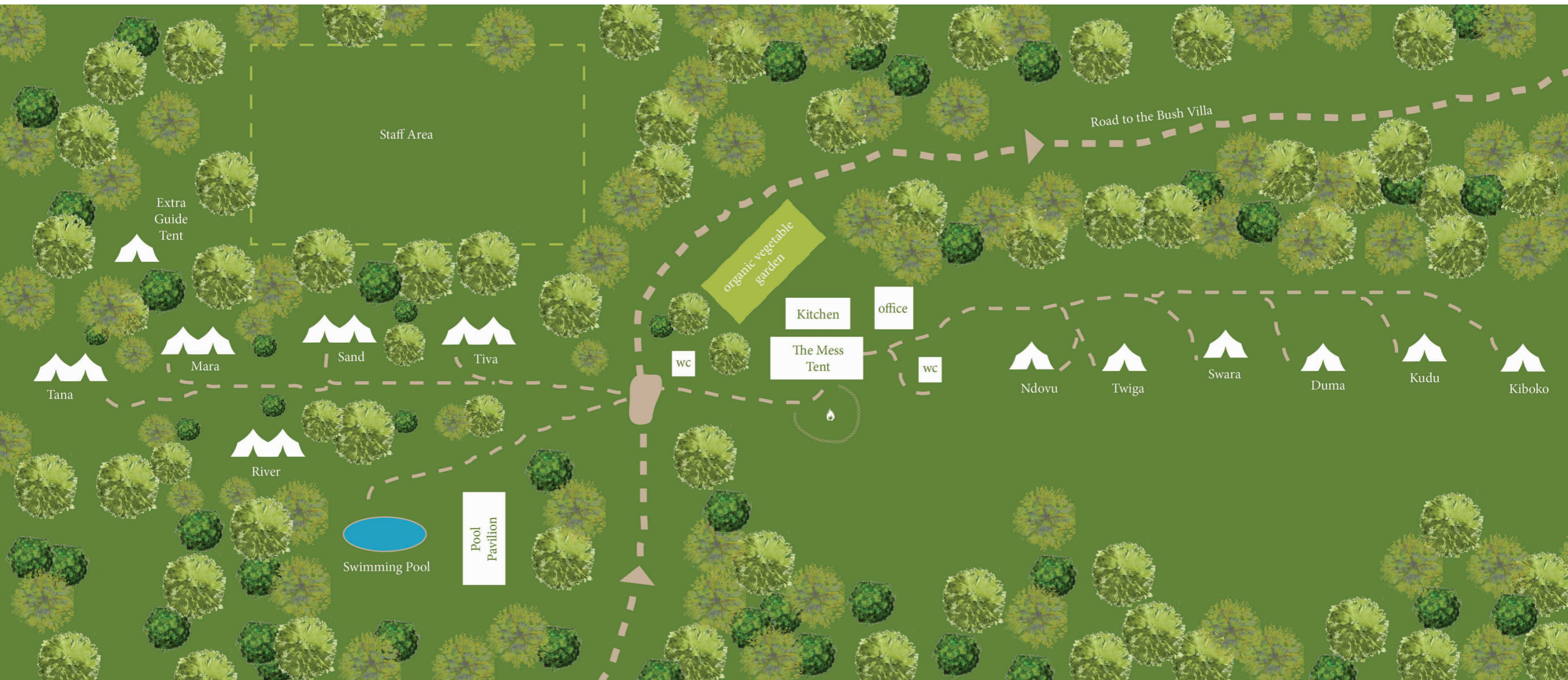


REMOTE & ACCESSIBLE

THE MAASAI MARA IN THE SOUTH OF KENYA IS FAMOUS FOR ITS ASTOUNDING VARIETY OF WILDLIFE. WITH BOTH RESIDENT AND TRANSIENT POPULATIONS OF LION, LEOPARD, CHEETAH, HYENA, GIRAFFE, ELEPHANT, TO NAME A FEW, AS WELL AS OVER 450 BIRD SPECIES, THE VAST FERTILE PLAINS ARE DENSE WITH GAME. THE AREA HAS BEEN CLASSIFIED AMONG THE “SEVEN WONDERS OF THE WORLD” DUE TO THE EXTRAORDINARY ANNUAL MIGRATION FROM JULY TO NOVEMBER WHEN OVER 1.3 MILLION WILDEBEEST AND ZEBRAS CROSS THE SERENGETI TO THE MARA IN SEARCH OF GREENER PASTURES. HOWEVER, THE MARA NATIONAL RESERVE ITSELF, MEASURING 373,000 ACRES, IS ONLY A FRACTION OF THE GREATER MARA-SERENGETI ECOSYSTEM, MUCH OF WHICH FALLS UNDER OWNERSHIP OF PASTORALISTS. SOME OF THE ECOSYSTEM’S PRIME GAME VIEWING LIES WITHIN THE CONSERVATION AREA SURROUNDING THE RESERVE. THESE CONSERVATIVES HAVE BEEN SET UP BY THE PRIVATE SECTOR IN PARTNERSHIP WITH LOCAL LANDOWNERS IN ORDER TO CONSERVE THE LARGER MARA ECOSYSTEM BY EXTENDING THE PROTECTED AREA FOR WILDLIFE AND TO STANDARDIZE INCOME DISTRIBUTION AND ECO-SYSTEMS MANAGEMENT.



COTTAR'S 1920S SAFARI CAMP & COTTAR'S BUSH VILLA ARE SITUATED IN AN UNTOUCHED EXCLUSIVE 27,000-ACRE CONCESSION AREA IN OLDERKESI, BORDERING THE SERENGETI, MARA AND LOLIONDO RESERVES. THE LUXURIOUS CAMP AND THE PRISTINE AREA GUARANTEE PRIVACY AND AN ABUNDANCE OF WILDLIFE. LOCATED ON THE FAR SOUTH EASTERN PART OF THE MARA, WE ARE THE FIRST TO SEE THE GREAT WILDEBEEST MIGRATION COMING IN AND WE ARE THE LAST TO SEE THE HERDS HEADING BACK SOUTH INTO THE SERENGETI.



A MAP OF THE CAMP - PLEASE NOTE THAT THIS MAP IS NOT TO SCALE



WWW.COTTARS.COM

TEL:

+254 (0)733773377 / 8

+254 (0)700122122

EMAIL:

BOOKINGS@COTTARSAFARIS.COM