

COTTAR'S BUSH VILLA
MASAI MARA, KENYA



WELCOME TO COTTAR'S BUSH VILLA

THE AWARD-WINNING COTTAR'S 1920S SAFARI CAMP IS PROUD TO SHARE WITH YOU THE OPENING OF THIS EXCLUSIVE MARA VILLA CALLED 'COTTAR'S BUSH VILLA' IN KENYA, EAST AFRICA. THE VILLA BORDERS THE LATEST ADDITION TO THE 7 WONDERS OF THE WORLD, THE MAASAI MARA NATIONAL RESERVE AND, IS ALSO ONE KILOMETRE FROM THE TANZANIA SERENGETI GAME RESERVE.

THE VILLA WAS DESIGNED BY CALVIN AND LOUISE COTTAR AND BUILT BY HAND USING INDIGENOUS AND ECO-FRIENDLY MATERIALS. THE VILLA IS MANAGED WITHIN THE SAME AREA AS COTTAR'S 1920S SAFARI CAMP, AND GUESTS CAN ENJOY THE SAME LEVELS OF SERVICE AND STANDARD FOR WHICH THE CAMP IS KNOWN. FOR THOSE THAT WANT ABSOLUTE PRIVACY IN THE MAASAI MARA, COMBINED WITH DEDICATED AND DISCRETE STAFF, AWARD-WINNING GUIDES, AND AN ABUNDANCE OF WILDLIFE, COTTAR'S BUSH VILLA OFFERS THE ONLY REAL PRIVATE LUXURY HOME IN THE MAASAI MARA.

THANK YOU FOR CHOOSING COTTAR'S BUSH VILLA AND WE HOPE YOU ENJOY YOUR STAY WITH US.

COTTARS SAFARI SERVICE SINCE 1919...THE TRADITION CONTINUES.



THE ENTRANCE TO COTTAR'S BUSH VILLA



COTTAR'S BUSH VILLA HAS A BREATHTAKING VIEW ONTO THE SAVANNAH PLAINS THAT CARRY THE GREAT ANNUAL WILDEBEEST MIGRATION, AND IS SET AMIDST A BACKDROP OF THE OLDERIKESI HILLS.



THE AMAZING VIEW FROM THE UPSTAIRS LOUNGE



THE DOWNSTAIRS DINING AREA AND LOUNGE.
FOR FINE DINING, DRINKING, READING AND RELAXING.



THE CREAM ROOM, IN THE CENTRE, UPSTAIRS.

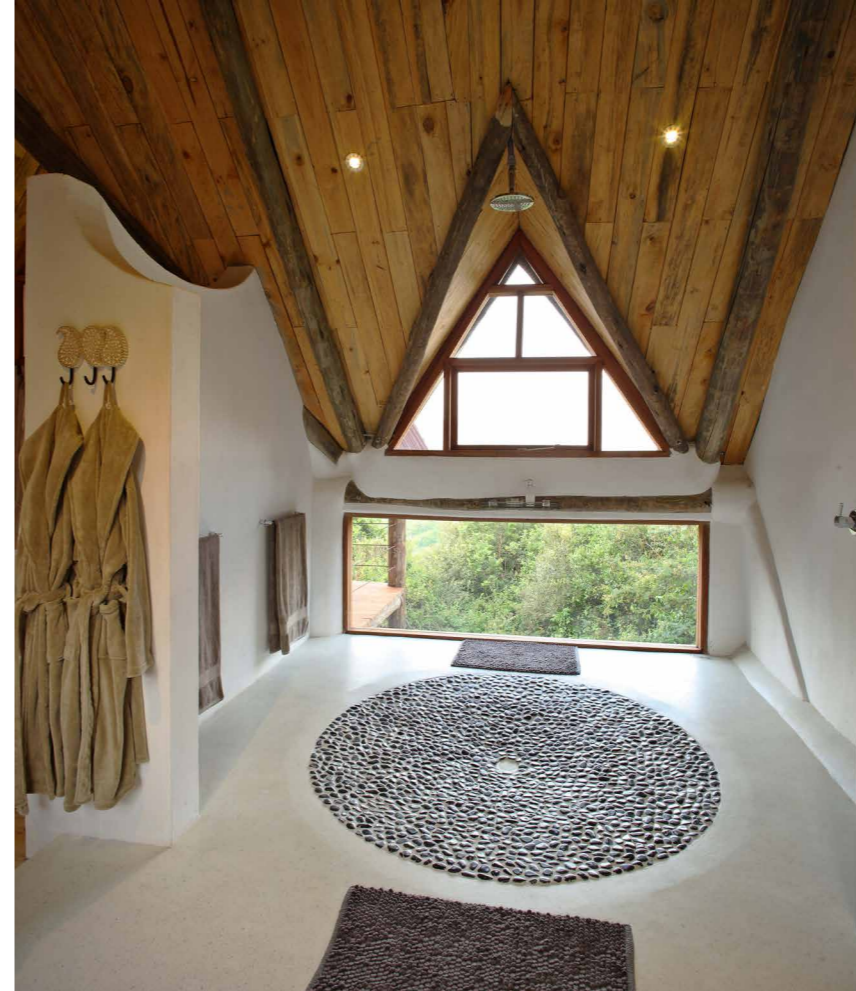


THE MASTER BEDROOM

COTTAR'S BUSH VILLA IS RENTED ONLY ON AN EXCLUSIVE BASIS, AND COMES WITH A DEDICATED STAFF OF 8. THE VILLA IS OVER 10,000 SQUARE FEET IN SIZE, AND FEATURES A LARGE LIVING ROOM, DINING ROOM, A MAGNIFICENT VIEWING DECK, AND FIVE EN-SUITE BEDROOMS, ALL WITH STUNNING VIEWS.



THE VILLA HAS INTERNET ACCESS THROUGHOUT, SATELLITE TV AND DVD, AND IS POWERED WITH ELECTRIC AND SOLAR ENERGY. A DESIGNATED GAME DRIVE VEHICLE(S) AND GUIDE(S) ARE PROVIDED TO GUESTS THROUGHOUT THEIR STAY.



ROOMING PLAN

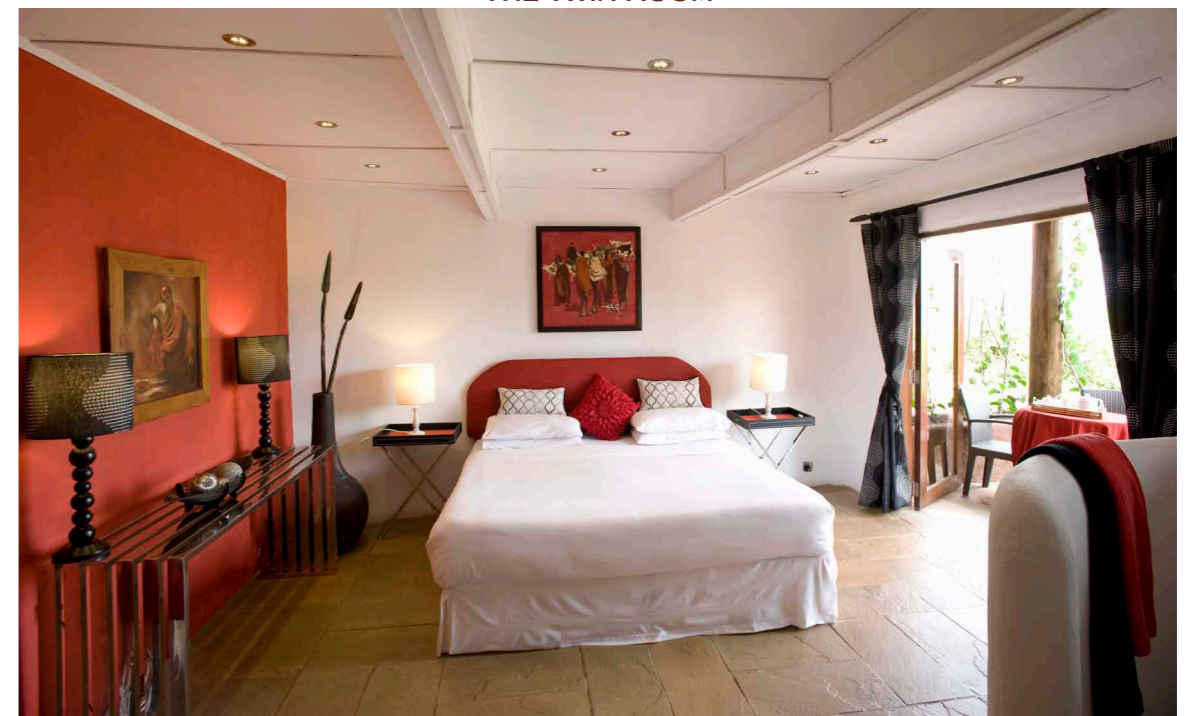
- 1.MASTER BEDROOM**
DOUBLE ROOM ON THE TOP FLOOR,
EN SUITE-LARGE OPEN SHOWER, TWO
VERANDAS OVERLOOKING DIFFERENT
VIEWS AND A FIREPLACE.
- 2.GREEN ROOM**
DOUBLE ROOM ON THE TOP FLOOR,
MOST PRIVATE OF THE ROOMS AS IT
IS ON ANOTHER WING OF THE HOUSE.
PRIVATE VERANDA AREA.
- 3.CREAM ROOM**
TOP FLOOR, LARGE DOUBLE ROOM
ADJOINING THE TOP DECK LIVING ROOM.
PRIVATE VERANDA AREA, EN SUITE-
SHOWER ONLY.
- 4.MAASAI RED ROOM**
DOUBLE ROOM ON THE GROUND
FLOOR, OPEN SHOWER AND PRIVATE
VERANDA.
- 5.TWIN ROOM**
LARGE SPACIOUS ROOM ON THE
GROUND FLOOR WITH TWIN BEDS (TWO
EXTRA BEDS CAN BE ADDED).EN SUITE-
SHOWER AND BATH AND A FIREPLACE.



THE DOWNSTAIRS LOUNGE



THE TWIN ROOM



THE MAASAI RED ROOM



THE VILLA'S EXCLUSIVE 25M SWIMMING POOL.
THE PERFECT PLACE FOR HOURS OF LOUNGING, READING AND RELAXING.



COTTAR'S KITCHEN

WE PRIDE OURSELVES ON THE QUALITY AND VARIETY OF OUR FOOD. OUR CHEFS PREPARE MOUTH-WATERING, HEALTHY AND BALANCED DISHES USING THE FRESHEST INGREDIENTS, MUCH OF WHICH IS GROWN IN OUR OWN ORGANIC VEGETABLE GARDEN.

THERE IS PRIVATE DINING AT THE VILLA. BUSH MEALS AND SUNDOWNERS AND MEALS AT THE POOL CAN ALSO BE ARRANGED ON REQUEST.



GUIDED BUSH WALK

ACTIVITIES

DAY & NIGHT GAME DRIVES
BUSH MEALS & SUNDOWNERS
SWIMMING POOL
RIVER/WATERFALL SWIMMING & FISHING

GUIDED BUSH WALKS
CULTURAL VISITS
GIFT SHOP

RUNNING WITH MAASAI
MASAI WARRIOR SCHOOL
SPA TREATMENTS

CLIMATE

KENYA'S DIVERSE GEOGRAPHY MEANS THAT TEMPERATURE, RAINFALL AND HUMIDITY VARY WIDELY, WE HAVE TWO RAINY SEASONS:

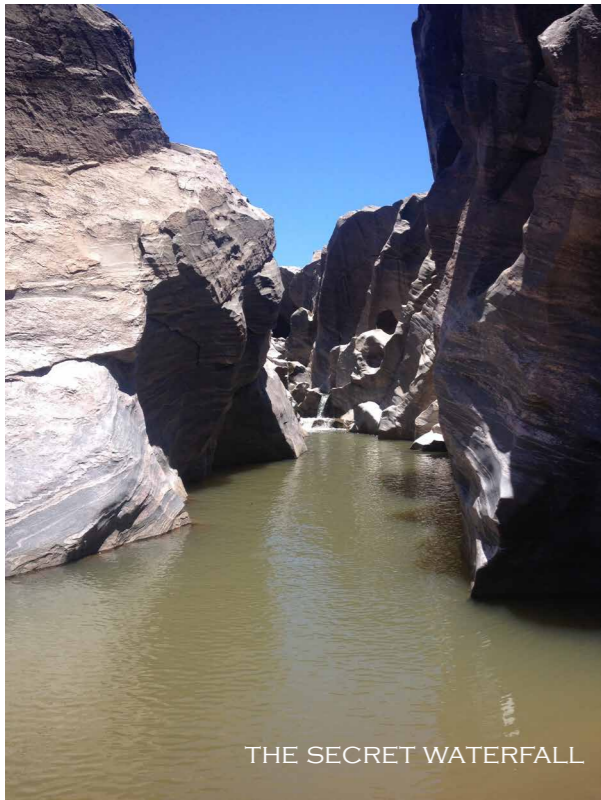
» THE "SHORT RAINS" WHICH OCCUR FROM LATE OCTOBER THROUGH NOVEMBER.

» THE "LONG RAINS" WHICH OCCUR FROM LATE MARCH TO EARLY JUNE.

TEMPERATURES VARY FROM 10°C TO 28°C. JULY AND AUGUST ARE THE COOLEST MONTHS AND ARE OFTEN OVERCAST ESPECIALLY IN THE MORNING. DECEMBER-MID MARCH IS THE WARMEST TIME OF THE YEAR.



EXPERIENCE THE GREAT MIGRATION



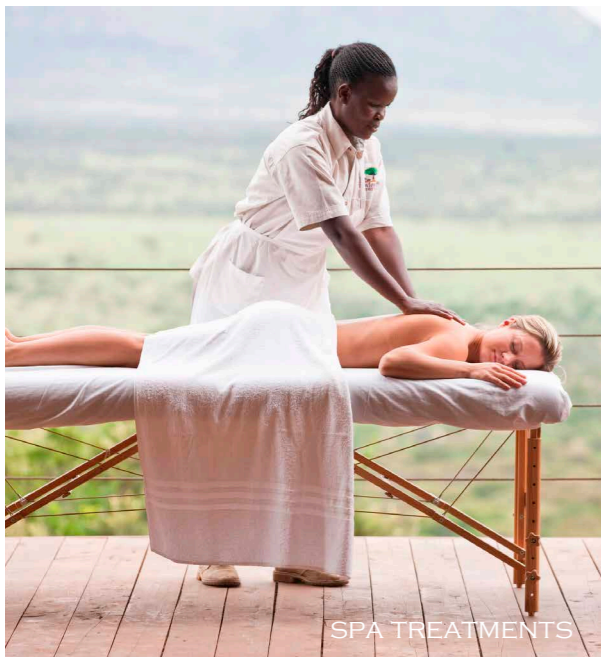
THE SECRET WATERFALL



SUNDOWNERS



MASAI DANCING



SPA TREATMENTS



LOCAL MASAI VILLAGE VISIT



MAGNIFICENT GAME VIEWING



MASAI WARRIOR SCHOOL



GAME DRIVES

PLEASE NOTE THAT ALTHOUGH WE HAVE A VINTAGE SAFARI CAR IT IS NOT THE MOST IDEAL VEHICLE FOR LONG GAME DRIVES SO OUR GAME DRIVES ARE DONE USING VEHICLES SIMILAR TO THE ONE IN THE PICTURE ABOVE. A GAME DRIVE IN THE VINTAGE CAR IS POSSIBLE ON REQUEST AND IT CAN BE USED FOR AIRSTRIP TRANSFERS.



A BUSH DINNER



THE JOURNEY

YOUR COTTAR'S EXPERIENCE BEGINS AS YOU DISEMBARK AT EITHER COTTAR'S PRIVATE AIRSTRIP (A 10 MINUTE DRIVE FROM THE BUSH VILLA) OR KEEKOROK AIRSTRIP (A 1.5 HOUR GAME DRIVE FROM THE BUSH VILLA). YOU WILL BE GREETED BY YOUR COTTAR'S GUIDE, WHO WILL ESCORT YOU AND YOUR PARTY TO THE PRIVATE BUSH VILLA FOR YOUR WELCOME INTRODUCTION. THEN IT'S ALL UP TO YOU TO DECIDE HOW YOU WOULD LIKE TO SPEND YOUR TIME WITH US. YOUR HOLIDAY BEGINS.



WHAT TO PACK?

IMPORTANT:

PASSPORT (KENYAN IMMIGRATION AUTHORITIES REQUIRE A MINIMUM OF TWO BLANK (UNSTAMPED) VISA PAGES IN THE PASSPORT TO ENTER THE COUNTRY) OR KENYAN IDENTIFICATION CARD

VISA

YELLOW FEVER VACCINATION (ONLY REQUIRED OF ALL TRAVELLERS OVER ONE YEAR OLD, ARRIVING FROM YELLOW FEVER INFECTED COUNTRIES)

AIR TICKETS/VOUCHERS/INSURANCE DETAILS

CREDIT CARDS (MASTERCARD OR VISA)

DEBIT CARDS (FOR USE AT ATM)

SUN GLASSES AND SOLID CASE

PRESCRIPTION GLASSES (WITH EXTRA PAIR) AND SOLID CASE

CONTACT LENSES (WITH EXTRA PAIR), WE RECOMMEND THAT YOU

ALSO BRING A PAIR OF GLASSES IN CASE OF DUST IRRITATION.

BOOKS/MAGAZINES/JOURNALS

CONVERTER/PLUG SET (KENYA USES 220V ENGLISH SQUARE PIN)

BINOCULARS – A MUST!

FLASHLIGHT (SMALL, WITH EXTRA BATTERIES)

CAMERA & EQUIPMENT: BATTERY CHARGER AND ADAPTER, LARGE MEMORY CARD ETC.

TOILETRIES:

MALARIA PROPHYLACTICS (IF YOU CHOOSE)

ANTI-HISTAMINE PILLS/CREAM (PILLS ARE MORE SUITABLE FOR PEOPLE WITH ALLERGIES AND FAST REACTIONS TO BITES)

INSECT REPELLENT

MOTION SICKNESS PILLS (IF NEEDED)

PAINKILLERS

SUNSCREEN (WE RECOMMEND LOTION WITH HIGH PROTECTION AS MOST OF KENYA IS AT HIGH ALTITUDES)

AFTERSUN LOTION

FACE AND HAND CLEANING WIPES

BODY LOTION

BATTERY OR HAND RAZOR

HAIR BRUSH

SHAMPOO AND CONDITIONER.

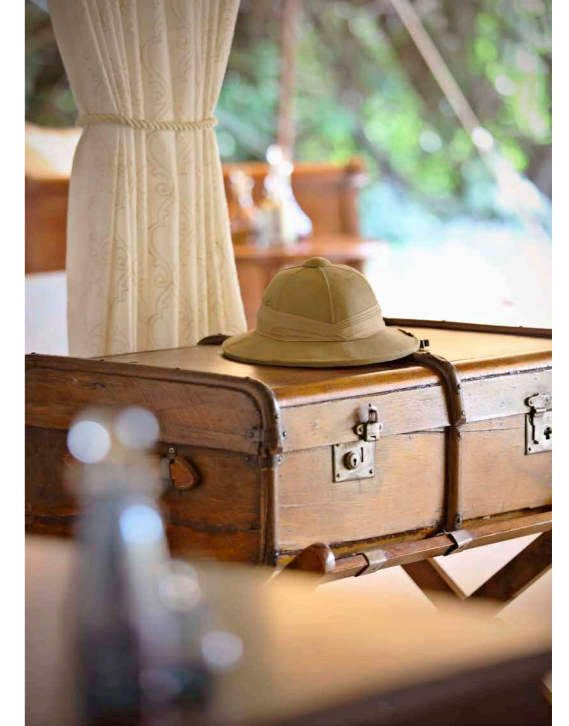
DEODORANT

FEMININE HYGIENE SUPPLIES

LIP BALM (RECOMMENDED WITH AN SPF)

TOOTHPASTE AND TOOTHBRUSH

EYE DROPS (IF NEEDED)



CLOTHING:

SUNHAT

WINDPROOF/WATERPROOF JACKET

FLEECE

JUMPER/SWEATSHIRT

SAFARI TROUSERS

SAFARI SHORTS

SPORTS SOCKS

SHORT SLEEVED SHIRTS & / OR T-SHIRTS

LONG SLEEVED SHIRTS/TOPS/BLOUSES

PYJAMAS

SWIMMING COSTUMES

UNDERWEAR

LIGHT WALKING SHOES FOR EVERYDAY USE

PAIR OF SANDALS/FLIP-FLOPS

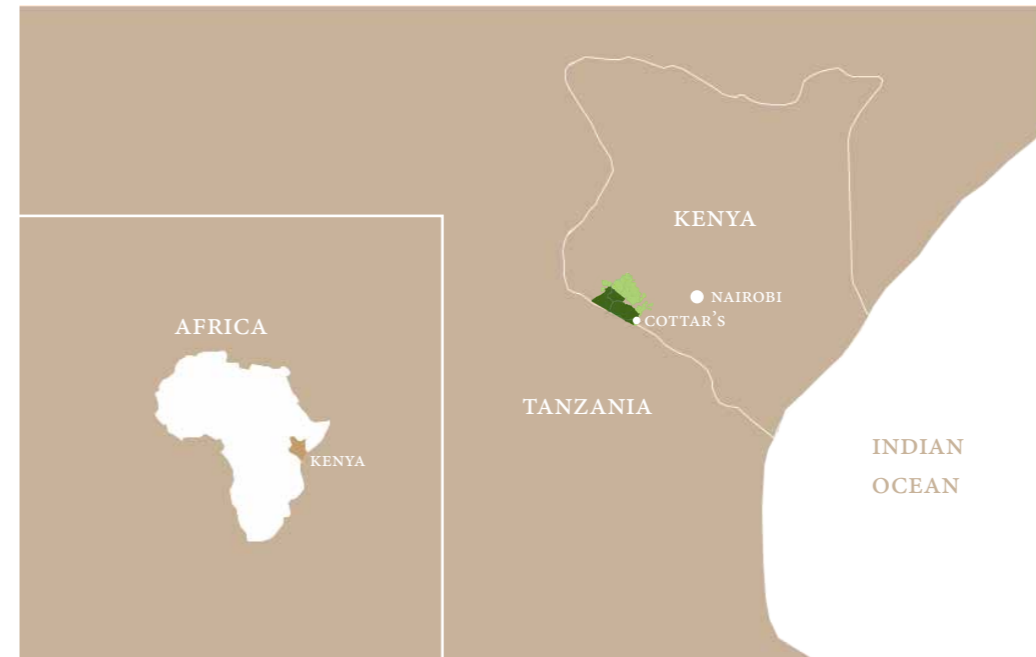
PAIR OF CLOSED SHOES FOR THE EVENING

NOTE: THERE MAY BE A RESTRICTION ON LUGGAGE LIMITS ON YOUR SAFARI – PLEASE ENSURE THAT YOU HAVE THE DETAILS FROM YOUR AGENT ACCORDING TO YOUR ITINERARY AND ASK YOUR AGENT AHEAD OF TIME IF YOU WOULD LIKE DETAILS ON THE FEASIBILITY AND COSTS OF TAKING EXCESS LUGGAGE WITH YOU ON ANY OF THESE RESTRICTED LUGGAGE SAFARIS.



REMOTE & ACCESSIBLE

THE MAASAI MARA IN THE SOUTH OF KENYA IS FAMOUS FOR ITS ASTOUNDING VARIETY OF WILDLIFE. WITH BOTH RESIDENT AND TRANSIENT POPULATIONS OF LION, LEOPARD, CHEETAH, HYENA, GIRAFFE, ELEPHANT, TO NAME A FEW, AS WELL AS OVER 450 BIRD SPECIES, THE VAST FERTILE PLAINS ARE DENSE WITH GAME. THE AREA HAS BEEN CLASSIFIED AMONG THE “SEVEN WONDERS OF THE WORLD” DUE TO THE EXTRAORDINARY ANNUAL MIGRATION FROM JULY TO NOVEMBER WHEN OVER 1.3 MILLION WILDEBEEST AND ZEBRAS CROSS THE SERENGETI TO THE MARA IN SEARCH OF GREENER PASTURES. HOWEVER, THE MARA NATIONAL RESERVE ITSELF, MEASURING 373,000 ACRES, IS ONLY A FRACTION OF THE GREATER MARA-SERENGETI ECOSYSTEM, MUCH OF WHICH FALLS UNDER OWNERSHIP OF PASTORALISTS. SOME OF THE ECOSYSTEM’S PRIME GAME VIEWING LIES WITHIN THE CONSERVATION AREA SURROUNDING THE RESERVE. THESE CONSERVATIVES HAVE BEEN SET UP BY THE PRIVATE SECTOR IN PARTNERSHIP WITH LOCAL LANDOWNERS IN ORDER TO CONSERVE THE LARGER MARA ECOSYSTEM BY EXTENDING THE PROTECTED AREA FOR WILDLIFE AND TO STANDARDIZE INCOME DISTRIBUTION AND ECO-SYSTEMS MANAGEMENT.



COTTAR'S 1920S SAFARI CAMP & COTTAR'S BUSH VILLA ARE SITUATED IN AN UNTOUCHED EXCLUSIVE 27,000-ACRE CONCESSION AREA IN OLDERKESI, BORDERING THE SERENGETI, MARA AND LOLIONDO RESERVES. THE LUXURIOUS CAMP AND THE PRISTINE AREA GUARANTEE PRIVACY AND AN ABUNDANCE OF WILDLIFE. LOCATED ON THE FAR SOUTH EASTERN PART OF THE MARA, WE ARE THE FIRST TO SEE THE GREAT WILDEBEEST MIGRATION COMING IN AND WE ARE THE LAST TO SEE THE HERDS HEADING BACK SOUTH INTO THE SERENGETI.



THE 4Cs

CONSERVATION: COTTAR'S WILDLIFE CONSERVATION TRUST (CWCT) SUPPORTS THE ESTABLISHMENT OF A 6,000 ACRE OLDERKESI WILDLIFE CONSERVANCY PILOT PROJECT ON THE BOUNDARY AND KEY WILDLIFE CORRIDOR OF THE MAASAI MARA NATIONAL RESERVE AND THE SERENGETI NATIONAL PARK. CWCT HAS BEEN ACTIVELY ENGAGED IN THE PRESERVATION OF NATURAL HABITATS AND WILDLIFE IN THE AREA, IN SECURING THE AREA FROM POACHERS AND FOR THE PROTECTION OF THE COMMUNITY.

COMMERCE: THE COTTAR'S ARE IN PARTNERSHIP WITH THE MASAI COMMUNITY AND MANAGE THEIR LAND ON THEIR BEHALF (FOR WILDLIFE USE) AT RATES COMPETITIVE WITH OTHER ECONOMIC USES PROVIDING ALTERNATIVE LIVELIHOOD OPPORTUNITIES.

CULTURE: COTTAR'S CAMP IS NEIGHORED BY THE MAASAI COMMUNITY, A TRIBE THAT HAS SO FAR MAINTAINED IT'S TRADITIONAL WAY OF LIFE. TO ENSURE GUESTS DON'T MISS OUT ON THE INTRICACIES OF THIS VIBRANT CULTURE, COTTAR'S TAKE THEM ON EXCURSIONS TO VARIOUS MAASAI VILLAGES FOR THEM TO EXPERIENCE MAASAI CULTURE FIRST HAND. WE ALSO PROVIDE A MARKET FOR BEADWORK AND OTHER TRADITIONAL HANDICRAFTS PRODUCED BY MAASAI WOMEN AS AN ADDITIONAL WAY OF PRESERVING MAASAI CULTURE AND SUPPORT FOR DEVELOPMENT.

COMMUNITY: COTTAR'S 1920S CAMP MAINTAINS CLOSE TIES TO NEIGHBORING COMMUNITIES AND IS KEEN TO ADDRESS THE CHALLENGES THEY FACE. THE CWCT HAS FOR MANY YEARS ACTIVELY SUPPORTED THE MAASAI COMMUNITY'S STRUGGLE TO OBTAIN LAND TENURE RESULTING IN THE LEGAL OWNERSHIP OF THE OLDERKESI GROUP RANCH IN 2010.

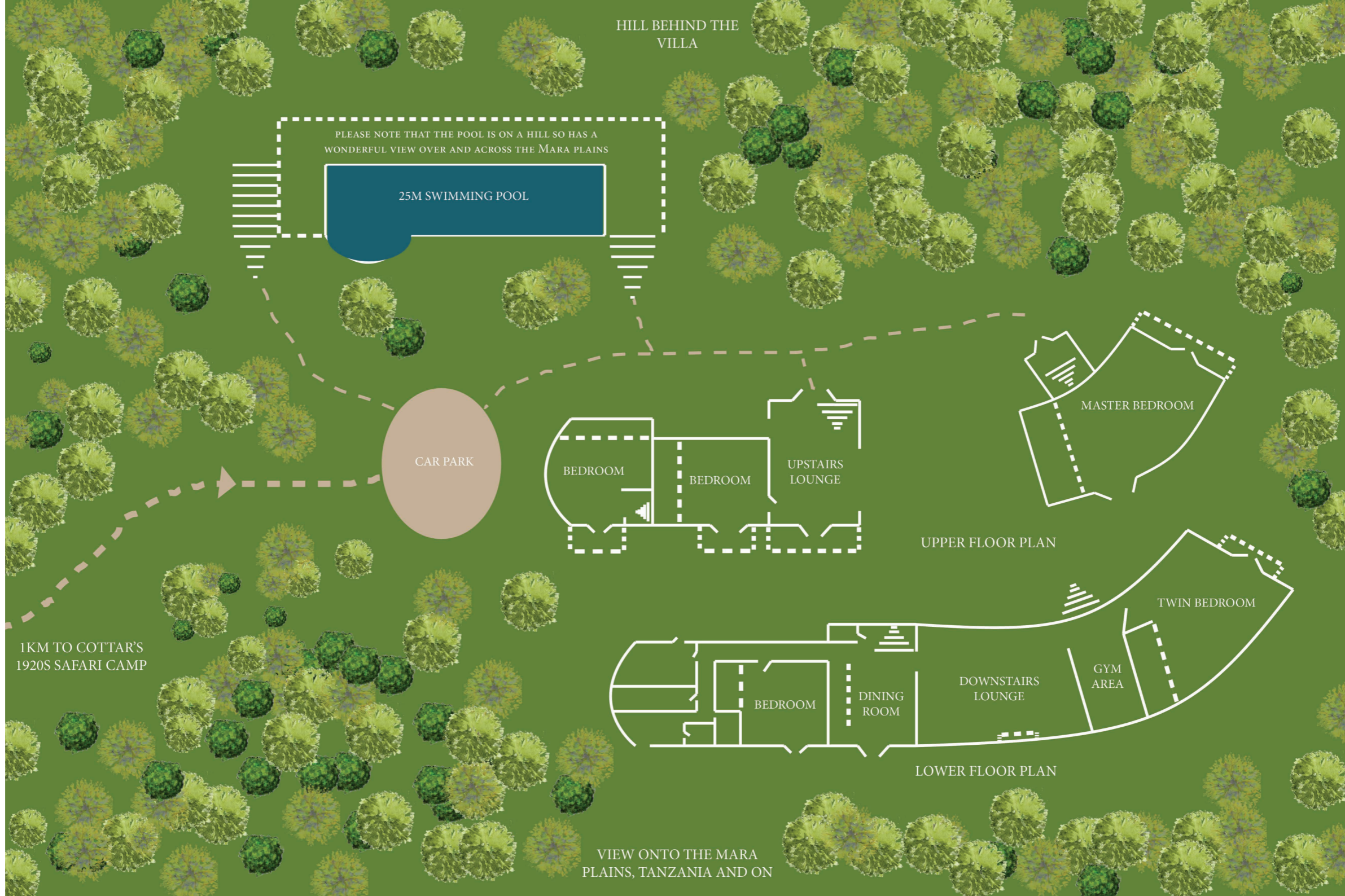
COMMUNITY PROJECTS

WE TAKE PRIDE IN SAYING THAT MOST OF OUR EMPLOYEES ARE FROM THE LOCAL COMMUNITY, BY THIS WE ARE ACTIVELY INVOLVING THEM IN DEVELOPMENT. WE CONDUCT LOCAL CLINIC VISITS (DENTAL, AMBULANCE TRANSFERS AND OTHER GENERAL SERVICES) WHICH ARE ARRANGED BY VOLUNTEER GROUPS WHO COME THROUGH COTTAR'S 1920S CAMP. WE HAVE ALSO BUILT A FOOT BRIDGE WITH BRIDGING THE GAP AFRICA. THE PEOPLE CAN NOW ACCESS SOCIAL AMENITIES UNLIKE BEFORE WHERE THEY HAD DIFFICULTY CROSSING THE SAND RIVER ESPECIALLY DURING FLOODS. THE BRIDGE IS NOW SAVING AN AVERAGE OF SIX LIVES A YEAR.

THE COTTAR'S WILDLIFE CONSERVATION TRUST (CWCT) WILL BE RUNNING A SCOUT OPERATION FOR WILDLIFE MONITORING, ANTI-POACHING AND ANTI-DEFORESTATION, AND A HOST OF OTHER FUNCTIONS NECESSARY TO OPERATE A WILDLIFE CONSERVANCY. WE HAVE ALSO ACQUIRED A GYROCOPTER TO DO AERIAL RECONNAISSANCE OF ACTIVITIES WITHIN THE CONSERVANCY AND WIDER MARA AREA TO HELP BUILD A TIME LAPSE DATABASE OF LAND USE CHANGE, WILDLIFE AND LIVESTOCK COUNTS. ADDITIONAL DONOR FUNDING FOR THIS WILL HAVE A BIG IMPACT ON LAND USE CHANGE DECISIONS FOR THE FUTURE.

IN REGARDS TO BEING MEMBERS OF THE LONG RUN DESTINATIONS WHICH PRACTICE THE 4C'S (COMMUNITY, CONSERVATION, CULTURE & COMMERCE), AND PRIOR TO THE CONSERVANCY PROJECT, COTTAR'S BUILT THE OLPALAGILAGI PRIMARY SCHOOL FOR A TOTAL OF 200 STUDENTS, PAYING TEACHERS SALARIES AND — TO KEEP THE CHILDREN COMING TO SCHOOL — WE ALSO RUN A FEEDING PROGRAM FOR THEM.

MANY THANKS TO ALL THE PEOPLE AND ORGANIZATIONS THAT MADE EFFORTS TO SUPPORT CWCT. NOTHING OF VALUE IS EVER FOR FREE, NOR CAN ANYTHING SUSTAINABLE BE ACHIEVED WITHOUT OWNERSHIP AND COMMITMENT BY THE INTENDED BENEFICIARIES.



A MAP OF THE BUSH VILLA - PLEASE NOTE THAT THIS MAP IS NOT TO SCALE

WWW.COTTARS.COM

TEL:

+254 (0)733773377 / 8

+254 (0)700122122

EMAIL:

BOOKINGS@COTTARSAFARIS.COM